

AVANI+

Bangkok

Avani+ Riverside Bangkok Hotel



Essential comforts, great views
and easy trips.

With a seamless blend of contemporary style and modern warmth, the Avani+ Riverside Bangkok Hotel is perfect for any kind of visit. From honeymoons to getaway holidays to business trips, the custom Avani blend of relaxed comfort and inspiring spaces makes this a great spot to unwind and recharge.

Overlooking Bangkok's bustling Chao Phraya River, Avani+ Riverside Bangkok Hotel is perfectly situated to

get away from the hustle and bustle of the city, to grab a bite, see the sights or head to a meeting. Shuttle boat services to the BTS skytrain at the Saphan Taksin boat pier makes connecting to the city's major commercial, shopping and entertainment districts a breeze, but if you prefer to stick close, Riverside Plaza has a myriad of shops and entertainment outlets to keep you occupied.

Opening Date:	May 2016
Address:	257 Charoennakorn Road, Thonburi, Bangkok 10600 Thailand
Telephone:	+66 (0) 2431 9100
Facsimile:	+66 (0) 2431 9111
Central Reservations:	+66 (0) 2365 9110
Central Reservations Email:	reserveavani@avanihotels.com
Email:	avaniplus.bangkok@avanihotels.com
Web Address:	avanihotels.com/riverside-bangkok





Management:

Avani Hotels & Resorts

Ownership:

Minor International PCL

General Manager

Jose Luis Duran Sanles
jsanles@avanihotels.com

**Cluster Director of Sales
and Business Development**

Supachai Punja-apisith
supachai_pu@minor.com

Essential Room Comforts

Avani+ Riverside Bangkok Hotel offers 250 guest rooms including 24 suites, all on levels 12 and above; with fantastic river views. Each guest room is refreshingly understated showcasing the contemporary sense of style, combined with warm and hospitable spirit. Practical yet sophisticated in character, personal touches and little details ensure a memorable experience.

Avani River View Room (30 m²)

Avani River View Rooms offer the perfect space to relax, work and sleep in style. Stay connected with WiFi access. Make yourself comfortable with a fully stocked mini bar and take in an uninterrupted view of the River of Kings. Enjoy essential comforts at your finger tips with our IPTV system. Sink into sleep with ease and wake up feeling fresh and ready for the day ahead.



Avani Panorama River View Room (30 m²)

Avani Panorama River View Rooms offer the perfect space to relax, work and sleep in style. Stay connected with WiFi access. Make yourself comfortable with a fully stocked mini bar. From high up, take in uninterrupted panoramic views over the Chao Phraya River and Bangkok's skyline. Enjoy essential convenience with our IPTV system. Sleep in stylish comfort and re-energise for a fresh new day. You are going to love the panorama from the 16th floor and above.



Avani River View Junior Suite (62 m²)

Avani River View Junior Suites spoil you with generous space and contemporary comforts. The fresh crisp white bathroom flows into a delightful well-appointed bedroom. Keep in touch with WiFi and allow our IPTV system to take care of your every need. Soak in panoramic river views through wide windows from your bedroom or as you soak the day away in a full size tub.

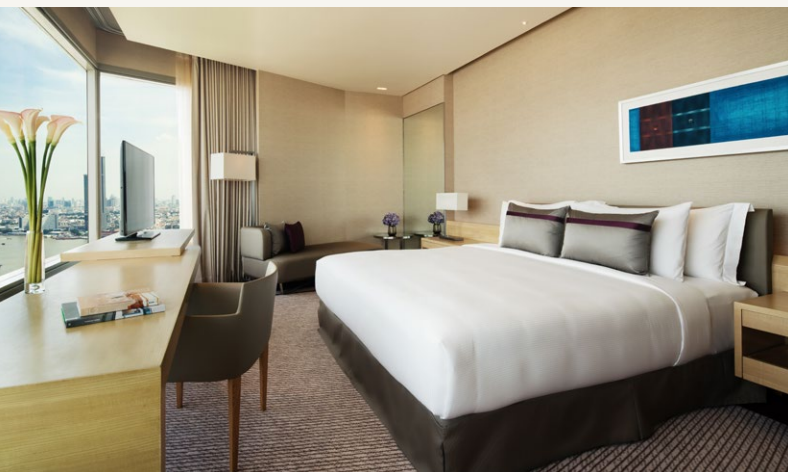


Avani Panorama River View Junior Suite (62 m²)

Gaze out at the mighty Chao Phraya from your plush panoramic pad and snap incredible shots of glittering Asiatique across the river. There's room to spread out in this chic corner suite, so kick back, soak in the tub, order room service and make the most from your AvaniClub benefits.

Avani River View One Bedroom Suite (58 m²)

Relax in spacious style with everything you need to hand. Enjoy sweeping Chao Phraya panoramas from your 25th-floor perch. Surf and connect with speedy WiFi and with your IPTV system. Refresh in a rain shower, lounge in a king bed and get comfy in a fluffy robe and slippers.



Avani River View Two Bedroom Suite (134 m²)

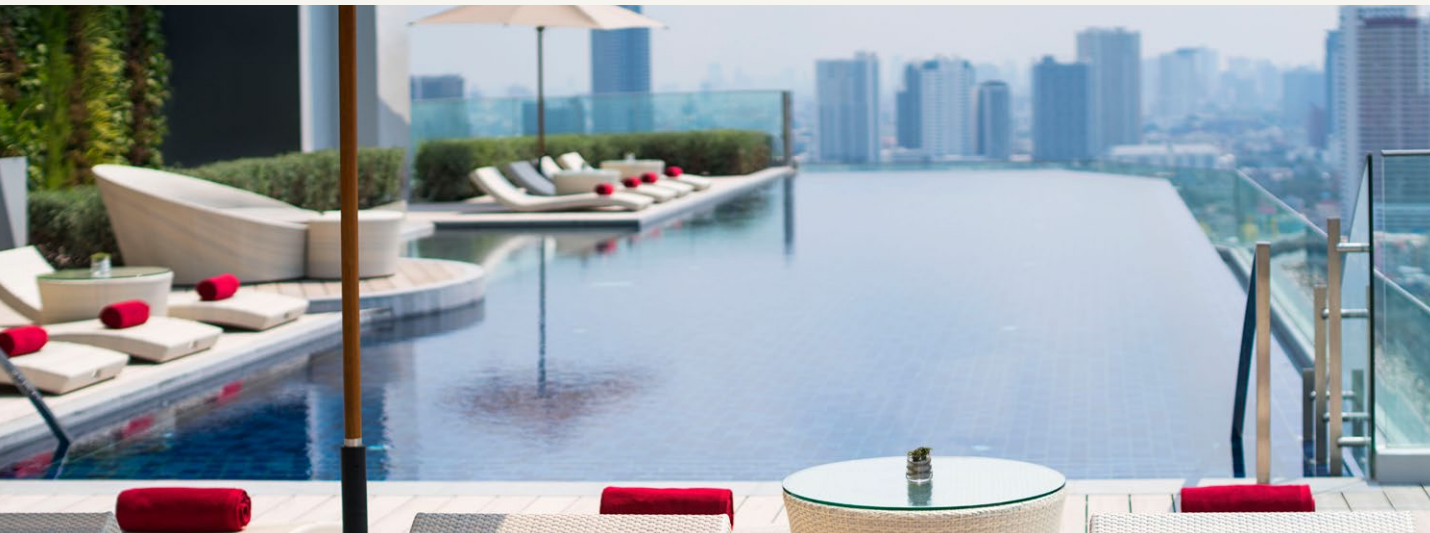
Families and friends have plenty of space to stay and play in our two-bedroom, two-bath suites. Separate living and dining spaces, plus a kitchen and wet bar, mean that everyone can stretch out in style and enjoy WiFi, mini bar snacks, added comforts from the IPTV system and the endless views of the river.

Avani River View Three Bedroom Suite (167 m²)

With modern style and exceptional amenities amongst suites in Bangkok, the Avani River View three-bedroom, three-bath suite was designed with you in mind. Stay plugged in with WiFi and enjoy the benefits of the IPTV system. Sink into the bathtub to relax and unwind. Sneak into the full kitchen and wet bar for a midnight snack, or just nibble from the mini bar. Enjoy exceptional views of the River of Kings, along with all the details that matter to those travelers seeking a luxurious getaway on the river.



Room Type	Total	Room Size (m ²)	Accept Roll Away	Maximum Capacity	
Avani River View Room	75 Rooms		30	No	2 Adults
	27 King	48 Twin			
Avani Panorama River View Room	151 Rooms		30	No	2 Adults
	81 King	70 Twin			
Avani River View Junior Suite	10 Suites		62	Yes	3 Adults
	9 King	1 Twin			2 Adults + 1 Child
Avani Panorama River View Junior Suite	10 Suites		62	Yes	3 Adults
	10 King				2 Adults + 1 Child
Avani River View One Bedroom Suite	1 Suite		58	Yes	3 Adults
	1 King				2 Adults + 1 Child
Avani River View Two Bedroom Suite	2 Suites		134	Yes	5 Adults
	2 King / 1 King + 1 Twin				3 Adults + 2 Children
Avani River View Three Bedroom Suite	1 Suite		167	Yes	7 Adults
	2 King + 1 Twin				6 Adults + 1 Child
Total	250 Rooms				



Room Features

- All rooms and suites enjoy panoramic river views
- Rooms and suites from level 12 and above
- King or twin beds
- Spacious lounge areas for suites
- In-room mini bar
- Tea and coffee making facilities
- Select suites come with full kitchen and wet bar
- LCD TV

- Complimentary internet WiFi
- IPTV - Internet Protocol Television, an interactive live TV-based service



Refresh & Relax

Take in stunning uninterrupted views of the river and city skyline from the roof-top 25-metre infinity swimming pool. Enjoy an energetic session at the fully equipped gym AvaniFit.

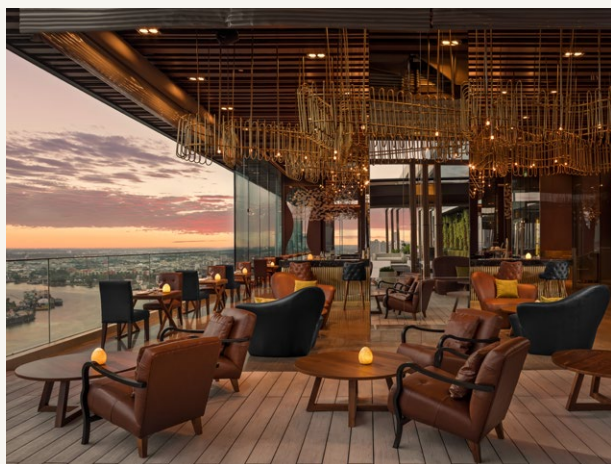
- AvaniFit
- Rooftop Infinity swimming pool from 6:00 am - 8:00 pm
- Pool Bar
- Nightly live music
- Local experiences
- Shopping and entertainment

- Concierge / Avani Welcome at level 1
- Babysitting
- Meeting and banquet facilities
- Wedding facilities
- Complimentary shuttle boat service to Saphan Taksin skytrain station (15 minutes)
- Riverside Plaza for shopping and entertainment (within the hotel building)
- Anantara Riverside Bangkok Resort for dining and entertainment (within walking distance)



Wine & Dine

From specialty dining with focus on 'Honest Food' concepts to designer deli goodies, four in-house restaurants and bars offer a fuss free take on delicious simplicity and views worth lingering over. Savour sunrise or sunset by the riverside, or drink and dine while taking in the view from the rooftop. On the go? Grab a quick snack from The Pantry or meet up over refreshments at the lobby bar.



SEEN RESTAURANT & BAR

Opening Hours

Daily 6:00 pm - 1:00 am

SEEN Restaurant & Bar Bangkok is a multi-storey, multi-sensory playground overlooking the city skyline and Chao Phraya river. A modern Portuguese-Brazilian menu from celebrity chef Olivier da Costa is cooked to perfection and served up by Chef de Cuisine Alexandre Castaldi. Head to the lounge, deck or stunning rooftop for sensual beats by Music Director Scotty B and worldly cocktails by award-winning.



THE PANTRY

Opening Hours

Daily 7:00 am - 7:00 pm

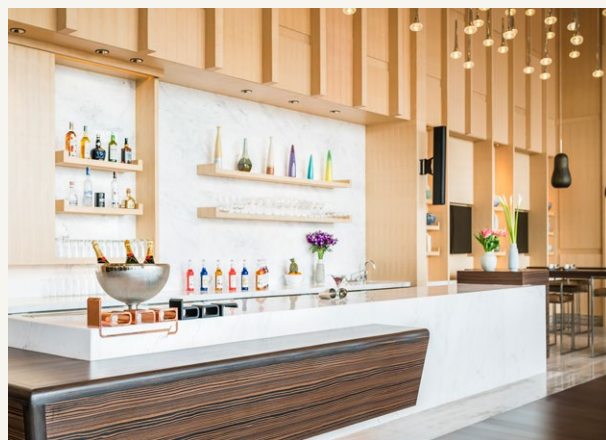
The Pantry, our cosy deli-café, offers wholesome tasty treats for nourishment throughout the day. Fresh and flavourful, our healthy juices and smoothies will power you up with a rainbow of vitamins, while artisanal coffee, tea, milkshakes and frappe all pair wonderfully with playful pastries. Unwind with river views in a welcoming, bakery-like setting. The Pantry is located on the ground floor of Avani+ Riverside Bangkok.



Skyline

Opening Hours
Daily 6:00 am - 10:30 pm

Savour sunrise and sunset with uninterrupted views of the Chao Phraya River at Skyline, our all day dining restaurant. Serves an international breakfast and daily lunch buffets as well as weekend dinner buffets filled with local specialties. Craving something specific? A la carte treats are also available.



Long Bar

Opening Hours
Daily 11:00 am - 11:00 pm

A selection of snacks and delightful afternoon tea is served at the modern and welcoming lobby bar, offering the perfect spot to connect with friends or unwind after a long day.



Lost & Found

In a forgotten bolthole on the banks of the Chao Phraya, the chance to find yourself awaits. Leave the world behind and step inside a celebration of self-expression.

Once a secret retreat for noble elites, who held lavish underground banquets while battles raged above, this opulent shelter was lost for centuries. Rediscovered by freedom seekers, the decadent destination is brought to life once again as a space where everyone has a place.

At Lost & Found, every meal is a feast, every night is a festival and every curious corner is a platform for pop-up performances from Bangkok's most talented artists who push the boundaries of fashion, art, theatre and drag.

Lose yourself in a world of extravagant, eccentric artistry and find what you've been searching for.



Meetings, events & weddings

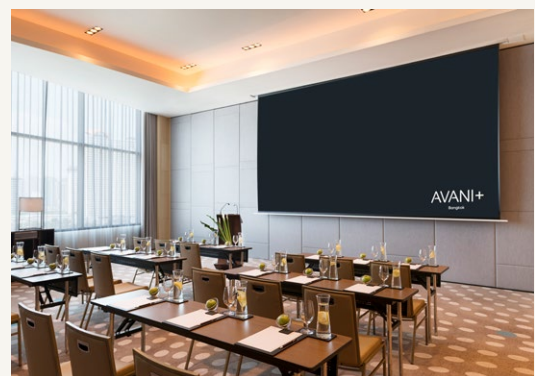
Avani+ Riverside Bangkok Hotel offers the right space for every event making it one of the most iconic and most versatile locations in Bangkok and Asia. The impressive meeting and event facilities boast 4,500 sqm of inspiring multipurpose space.

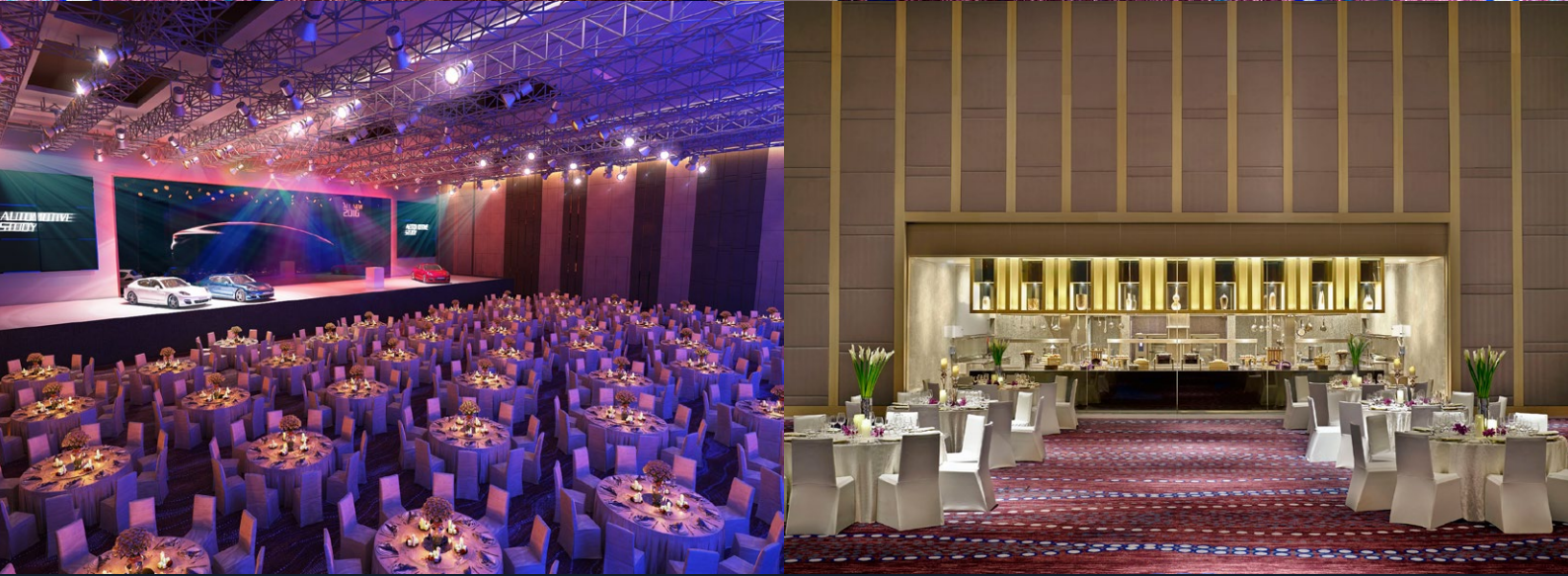
The 10th floor meeting facilities offer the most memorable views over the City of Angels. Impress and delight your guests by holding your celebrations at Grand Riverside Ballroom or at our roof top bar located on the 26th floor. Avani+ Riverside Bangkok Hotel events and conference facilities offer the most flexible and state of the art MICE (Meetings, Incentives, Conferences and Exhibitions) facility in Bangkok.

This iconic venue has a capacity for:

- 1,200 delegates
- 80 exhibition booths
- Accommodates 27 meeting rooms at Avani+ Riverside Bangkok Hotel and Anantara Riverside Bangkok Resort
- Bangkok's highest sophisticated Grand Ballroom (with a 11 metre high ceiling and the capacity to accommodate 720 guests banquet-style, 1,200 guests for a staged performance or 972 guests for theatre-style)
- Car Lift with direct access to the Grand Ballroom with an impressive weight load of 3,000 kg [the size of the Car Lift is at 6 m (L) x 2.6 m (W) x 2.2 m (H)]
- The meeting spaces boast a notable 1 ton live load per square metre
- The Terrace, an outdoor balcony for evening cocktails with dramatic views of Bangkok's skyline by night
- Generous pre-function areas for added space for large conferences

But it's more than just the numbers. You can count on the personal attention you deserve for the smallest of gatherings to the biggest conventions.



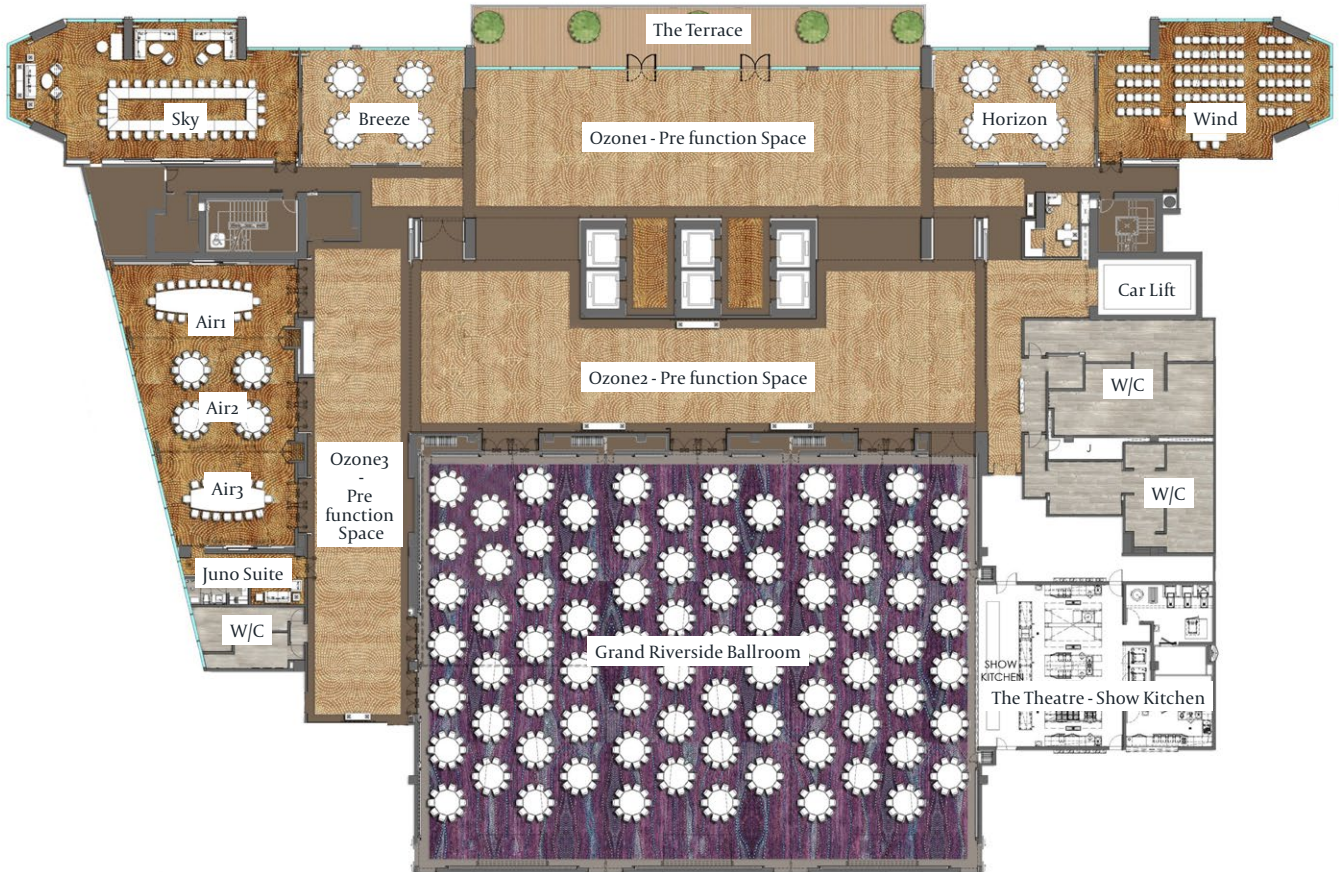


Grand Riverside Ballroom

Featuring one of the largest Grand Ballrooms on the river that has been especially designed to cater to groups of all sizes. Located on level 10, the ballroom can be separated into up to 4 different spaces and also includes the unique option of opening up onto a first of its kind, 'show kitchen'. Natural lights and warm hues of the high walls add to the ballroom's contemporary design and stylish character.

Fully equipped with the latest in audio-visual technology, our ballroom and function rooms offer easy flexibility whether it is a boardroom or a banquet for 720 guests.

Conference Facilities



Names	Area		Dimensions (W x L x H)		Seating Options						
	M ²	F ²	M.	Ft.	Theatre	Classroom	U-Shape	Boardroom	Banquet	Cocktail	H-square
Grand Riverside Ballroom	1152	12400	40 x 29 x 11	131 x 95 x 36	972	720	135		720	1200	174
- Lunar	385	4144	13.3 x 29 x 11	44 x 95 x 36	300	195	81		210	300	96
- Moon	385	4144	13.3 x 29 x 11	44 x 95 x 36	300	195	81		210	300	96
- Galaxy	385	4144	13.3 x 29 x 11	44 x 95 x 36	300	195	81		210	300	96
• Galaxy 1	190	2050	13.3 x 14 x 11	44 x 47 x 36	120	75	39		90	150	54
• Galaxy 2	190	2050	13.3 x 14 x 11	44 x 47 x 36	120	75	39	36	90	150	54
Wind	140	1507	8 x 18 x 4	26 x 58 x 13	120	72	33	36	80	100	36
Sky	175	1883	8 x 22 x 4	26 x 72 x 13	120	72	39	42	80	100	39
Air	220	2368	10 x 23 x 4	32 x 75 x 13	192	114	51	24	120	180	60
- Air 1	65	699	7 x 9 x 4	23 x 30 x 13	40	30	21	24	20	40	24
- Air 2	80	861	10 x 10 x 4	26 x 33 x 13	60	48	21	18	40	60	30
- Air 3	60	645	6 x 11 x 4	18 x 37 x 13	40	27	18	12	20	50	24
Horizon	90	990	8 x 12 x 4	26 x 38 x 13	30	18	15	12	20	30	18
Breeze	90	990	8 x 12 x 4	26 x 38 x 13	30	18	15	12	20	30	18

Pre Function Areas	Area		Seating Options (Cocktail)
	M.	F ²	
Ozone 1	434	4672	800
Ozone 2	391	4209	400
Ozone 3	200	2152	400
The Terrace	120	1290	-

Additional Services	Area	
	M.	F ²
Juno Suite	40	430



Location

Avani+ Riverside Bangkok Hotel is approximately 1 hour from Suvarnabhumi International Airport and approximately 45 minutes from Don Muang Airport. Our hotel limousine services from both airports are easily arranged through the hotel. Public taxis are also available from the pick-up counters at the airport. Public transportation from the airport is available by connecting to the BTS skytrain from the Airport Rail Link.

Avani+ Riverside Bangkok offers a short 20 minute boat ride from Saphan Taksin skytrain, a convenient connection to all other locations within the city. The boat transfers are complimentary and depart regularly from Saphan Taksin and the hotel.

Whether you fancy a relaxing holiday by the pool or a thrilling urban adventure, our Bangkok riverside hotel is conveniently situated for either type of traveller.

Weather

Bangkok has a tropical climate, similar to other parts of the country. From November to February, temperatures range from 18 to 32 degrees Celsius in Bangkok. The summer period is from March to June with the average temperatures in Bangkok within the range of 34-40 degrees Celsius; whereas the hottest period is in April. From July to October, Bangkok experiences the annual rainfall.

The best time to travel to Bangkok is between October to February when the temperatures and humidity are not as high, which makes it favourable for touring around this City of Angels. Night-time temperatures in December and January can be in the low 20s and this is the best time to experience the beauty of the River of Kings as the skies are clear.

GDS codes

Chain Code: GA
Galileo: B9038

Amadeus: BKKRIV
Sabre: 305459

Worldspan: BKKRI
Pegasus: ADVRIV